



Chromium-6 Detection Test Kit - TK11™

*for surface contamination,
dust particles, coatings
and paint layers*

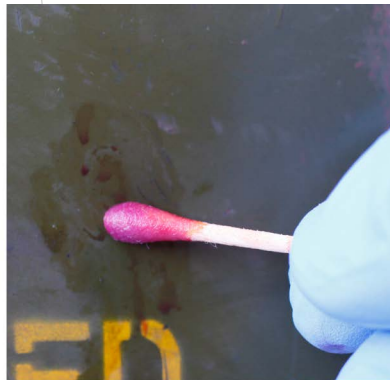


Chromium-6 can be harmful to human health and the environment. With this kit you can test the presence of chromium-6 in surface contamination, dust particles, coatings, paint layers or other materials. Using the kit will produce fast, safe and reliable results, that can help you to make sure that your materials are safe and avoid damage claims.

The test kit contains 25 test swabs, a dropper bottle, a test sample, and an English manual. Manuals of other languages and safety data sheets can be downloaded using the QR code provided.



Orange = no chromium-6
Examples of tests on paint layers



Purple = chromium-6

Testing for chromium-6

To test for the presence of chromium-6, rub the moistened end of the swab on the object or material in question. If the swab remains to have a light orange colour, there is no chromium-6 present. If the swab turns red to purple, the object or material contains chromium-6.

*Example of a test on a stainless steel bolt and nut.
The test swab clearly turns red/purple,
indicating that chromium-6 is present.*



T: +31 (0)85 30 36 411
E: info@matinspired.com
I: www.matinspired.com

MATinspired B.V.
Ericssonstraat 2
5121 ML Rijen
The Netherlands